



**TECHNOPRIME**  
CONSTRUCTIONS

# TECHNOPRIME VASUDHA

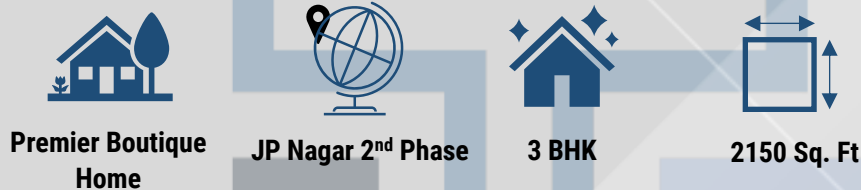


**PREMIUM  
BOUTIQUE  
HOME**

 **TECHNOPRIME**  
**Vasudha**

**Technoprime Vasudha** is a premium Boutique Home project located in JP Nagar 2nd Phase, near Ragigudda, where everything is just 5-10 minutes' walk away. This is a project where the charm of old traditions intertwines seamlessly with the wonders of modernity. This fusion is epitomized in its design, featuring spacious rooms, a vast utility area, and enchanting balconies with green planters. As the legacy of Technoart Constructions and Prime Developments, Technoprime a third generation in construction offers affordability without compromise. It stands proudly as one of the best-designed and most functional homes in the city.

### At a glance:



### Features:

- Only 4 Premium Homes
- 2 Car Parking per home
- Unit Area: 2150 Sq. ft.
- Structure: Stilt + 4 Floors
- Vastu Complaint, East facing
- Luxury Specifications
- Location: JP Nagar 2<sup>nd</sup> Phase, Near Ragigudda

### Amenities:

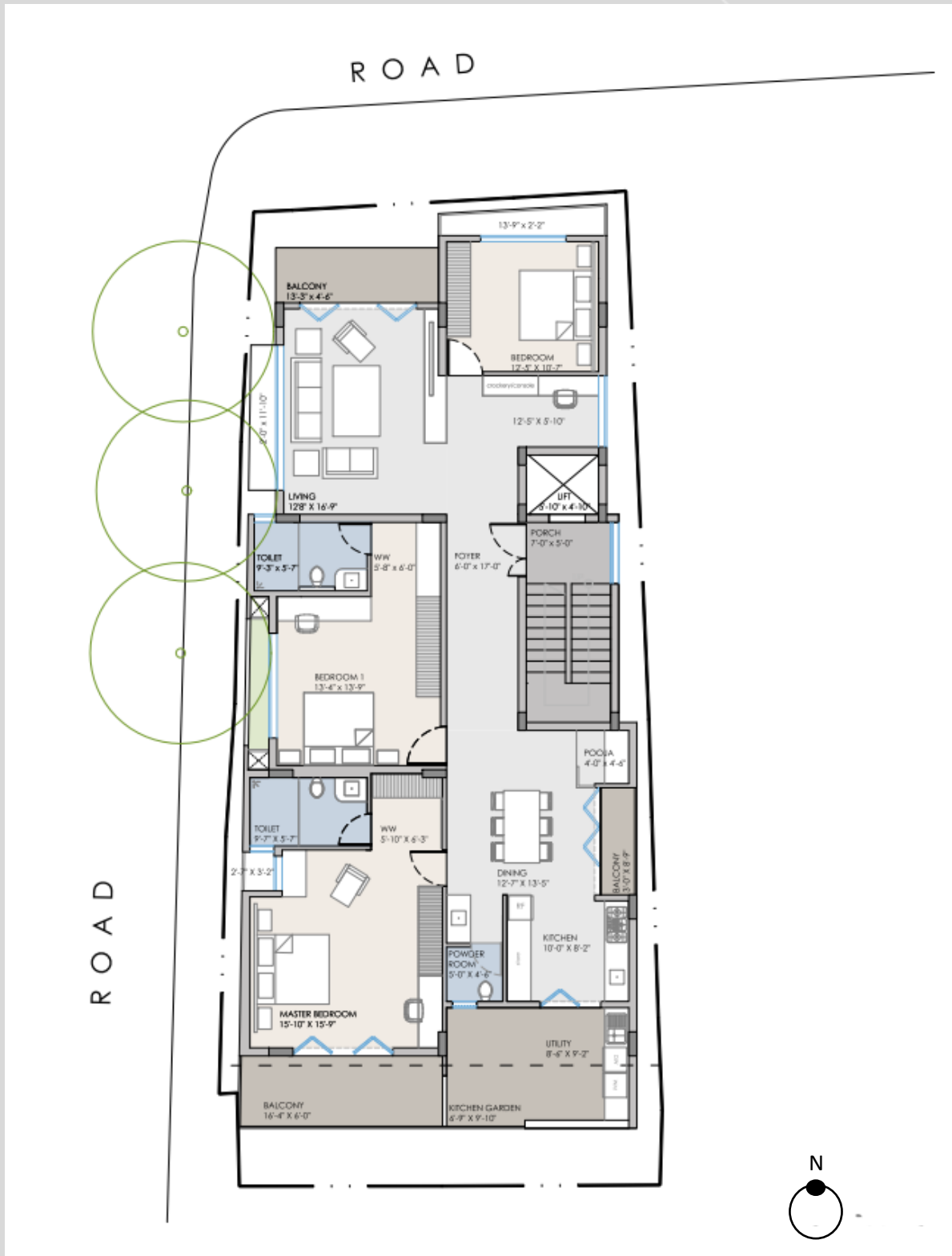
- Multipurpose Room
- Terrace Gazebo
- Designer landscaping
- Intercom
- DG Power Backup
- Lift
- Security
- CCTV in common areas







# Floor Plan



## SPECIFICATIONS

### Structure:

- RCC frame structure with solid concrete block masonry walls 6" for external walls & 4" for internal walls

### Flooring:

- Premium Vitrified Tiles
- Anti-skid tiles for Balconies

### Doors & Windows:

- Main Door: Polished Teak wood frame with teak veneer polished shutter
- Other Doors: Hardwood frame with veneer shutter
- UPVC 3 track sliding windows with mosquito mesh

### Kitchen:

- 20 mm thick black polished granite platform with Carysil Sink
- 2 feet tile dadoo above granite platform
- Provision for water purifier

### Utility:

- Antiskid tiles for flooring & glazed tile dadoo for walls
- Provision for washing machine, dish washer & vessel washing

### Toilets:

- Anti-skid tiles for flooring & glazed tile dadoo for walls
- Jaguar or equivalent chromium plated fittings
- Hindware/ Parryware or equivalent sanitary fixtures

### Painting:

- Acrylic emulsion paint for internal walls

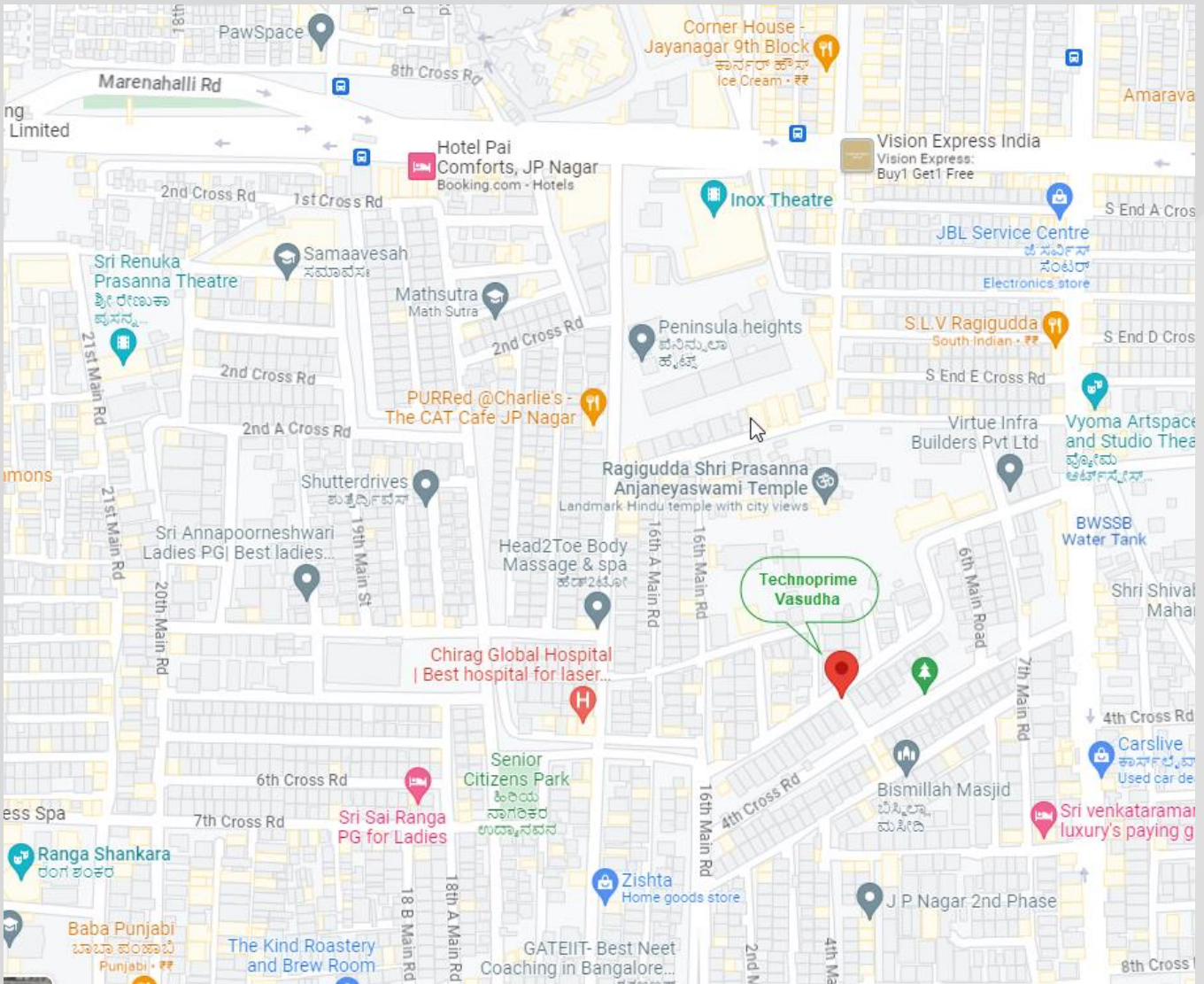
### Electrical:

- BESCOM power supply with individual meters
- Concealed copper wiring with circuit breakers for safety
- Modular switches with 5 & 15 amp points as per drawing
- Charging point for Electric Vehicles
- 24hrs DG Power back-up

### Lift:

- Johnson or equivalent make

**Location Map:** <https://maps.google.com/?q=12.912876,77.593292>



### CONTACT US

 **+91 90085 12277**

 **reachus@technoprimeconstructions.com**

 **www.technoprimeconstructions.com**

**TECHNOPRIME  
CONSTRUCTIONS**

#2/3, 1st Main, 'E' Block, 2nd Stage, Rajajinagar, Bengaluru - 560010.